

### Applies to: The Tinytag Connect System

## Introduction

As computers are replaced, or requirements change, it may be necessary to move a Tinytag Connect Master Gateway from one computer to another. This document outlines the best way to go about this. The process is fairly straightforward and should take no longer than an hour to complete (with some additional time required for radio systems to re-establish themselves).

This document also applies to the previous Radio version of the Tinytag Explorer software, which the Tinytag Connect software replaces. If you are currently running Tinytag Explorer version 4.11 or below, we recommend you upgrade, free of charge, to Tinytag Connect (which installs with Tinytag Explorer version 5.0 or above) as described on page 2 of this document, in the New Computer section.

## Background

Tinytag Connect uses a Windows service, called the Master Gateway, to manage the collection of data from a network of radio and/or LAN connected data loggers. This service also makes recorded data available across a network for users to view in Tinytag Explorer.

Only one master gateway can be run on a network at a time, so when a master gateway is moved from one computer to another, the old master gateway needs to be disabled before the new one is set up.

Whilst the process of moving the gateway is taking place, the loggers in the system will be recording locally and will download their data onto the new computer, adding it to the data copied across from the old computer, once the new gateway is up and running.

This means no data is lost during this process.

If recording on the default 10 minute logging interval that the loggers are set for as supplied, they will record for approximately two weeks before they start to overwrite their oldest data.

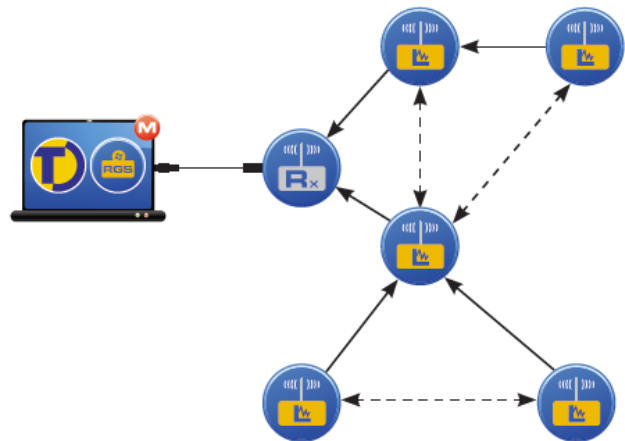
## Getting Started

Before starting the transfer of a master gateway from one computer to another, it is recommended that the data in the system should be backed up.

Data loggers should be downloaded in Tinytag Explorer and their data saved in .ttd files.

Loggers can be downloaded individually, or in groups, as appropriate for the user.

These files should not be needed, but this is a sensible precaution to take to ensure that data is not lost.



### On The Old Computer

#### Backing up Current System Data

Depending on the operating system running on the old computer, find and make a copy of the following files:

**C:\Program Files\Tinytag\Tinytag Explorer\var\**

or

**C:\Program Files (x86)\Tinytag\Tinytag Explorer\var\**

And the following registry location:

**HKEY\_LOCAL\_MACHINE\Software\Tinytag\Kola**

#### Receivers

Turn off any receivers and disconnect them from the computer.

If using LAN receivers or loggers, open the **NetBurner Virtual Comm Port** software (found on the computer's Start Menu under **NetBurner NNDK**) and delete the Comm port entries associated with them.

#### Stopping the Old Master Gateway

Go to **Options** and **Communication Options >> Tinytag Connect >> Use a Tinytag Connect Product >> Direct connection to Tinytag Connect Device >> Configure Gateway >> Do not run the Tinytag Connect Gateway Service**.

Click **Next**, **Stop it now** and **Finish** and then in the Communication Options screen, uncheck the **Use a Tinytag Connect Product** option (this stops the old master gateway running and prevents it from conflicting with the new one).

### On The New Computer

#### Software Installation and Activation

Install and activate Tinytag Explorer on the new computer.

The current version of Tinytag Explorer should be used, and if a copy of this is required it can be downloaded free of charge from:

**<http://www.gemini dataloggers.com/download-tinytag-explorer>**

Despite the upgrade comments, this is a full version of the software that can be installed directly on a new machine.

This software will also work with the user's existing activation code.

The activation code for the old system can be found on the old computer by going to **Help** and **About** in Tinytag Explorer.

**DO NOT CONNECT OR SETUP A RECEIVER OR ANY LAN LOGGERS UNTIL THE FILES FROM THE OLD COMPUTER HAVE BEEN COPIED TO THE NEW ONE.**

If a receiver or LAN logger is turned on before the data from the old system is copied across, the system will start creating new files as loggers sign in. To avoid any conflicts or data loss, it is better to get everything set up, with the old data copied across, before turning on or configuring any receivers or LAN loggers.

*Continued . . .*

### On The New Computer

#### System Setup

Run through the setup for the radio system, as described in the Tinytag Connect User Manual, **IGNORING ANY RECEIVER SETUP INSTRUCTIONS.**

#### Copy Across Existing Data

Copy the backed up files from the old computer into the same locations on the new computer.

#### Turn on the Receiver

Once the system has been set up, and the old data has been copied across, a directly connected receiver can then be plugged in and turned on, or a LAN receiver or logger configured as described in the Tinytag Connect User Manual.



### System Configuration

The system will now self-configure to work out what data it has and what data is in the loggers. Any missing data will be downloaded from the loggers and added to the end of the data already on the computer.

This process means that the user won't lose any data, but there may be a gap between the last reading of the old data and first of the new where Tinytag Explorer doesn't plot a line to join them up.

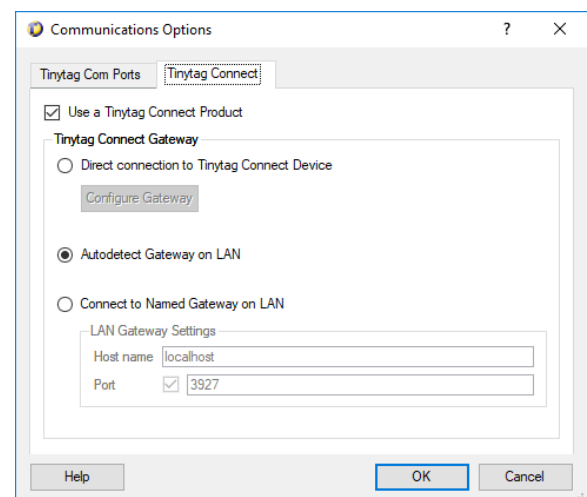
Loggers should start to list again pretty quickly, but this will depend on the number of loggers in the system and the frequency they have been set to record at (basically, once set up, it is best to leave the system to configure itself for at least a couple of hours - overnight is preferable).

Once all of the loggers have signed in and downloaded any additional data, the system can be worked with as before.

### Viewing Data From Another Computer

If users are working with the system from other computers, on the same LAN, and their copy of Tinytag Explorer is set up to auto-detect the master gateway, this will update automatically and they will be able to continue working with the system as before.

If their copy of Tinytag Explorer is set to talk to a master gateway running on a specific IP address, the IP address of the computer running the new master gateway will need to be entered (go to **Options** and **Communication Options** >> **Tinytag Connect** and update the IP address in the **Connect to a Named Gateway on LAN** section).



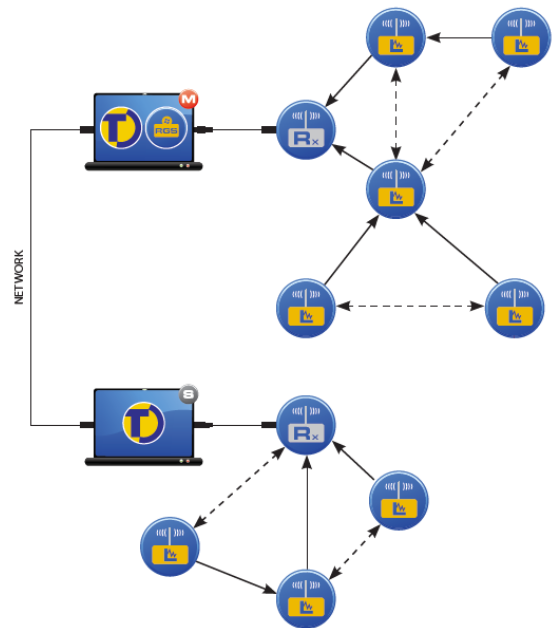
### Slave Gateways

As with viewing data, if the system has another receiver connected through a slave gateway, the slave gateway will need to be redirected to the new master gateway.

If set up to auto-detect the master gateway, the system should update automatically.

If set to talk to a specific IP address, the IP address of the computer running the new master gateway will need to be entered on the computer running the slave gateway (this is done in the Slave Gateway set up, by going to **Options** and **Communication Options** >> **Tinytag Connect** >> **Use a Tinytag Connect Product** >> **Direct connection to Tinytag Connect Device** >> **Configure Gateway** >> **Slave Gateway**).

**Note: Slave receivers should also be turned off whilst the master gateway is being upgraded.**



### Useful Information

If a copy of the data from the old computer is not required, stop the old gateway running and move any receivers and LAN loggers across to the new computer and then run through the set up for a master gateway as for a new installation.

### Further Information

Further information on the Tinytag Connect System, including copies of the system's User Manual, can be found on our website here:

<http://www.geminidataloggers.com/connect>

Further information on setting up a system, including Slave Gateways, can also be found in Tinytag Explorer's help file (go to **Help** and **Contents** in the software).

If you should have any questions about the above, please contact your supplier or Gemini Technical Support:

e: [help@tinytag.info](mailto:help@tinytag.info) t: +44 (0)1243 813009